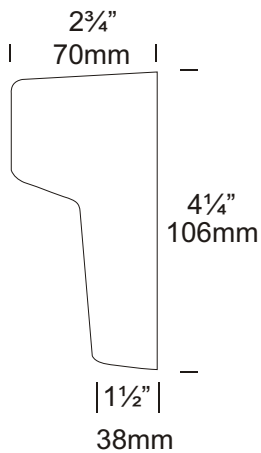


# Mouse Lite Square

Cat. No. MOUSESQ



The Mouse Lite Square is a solid bronze or solid 316 stainless steel luminaire for surface mounting. A space in the wall behind the luminaire is not required for cable connection due to the design that includes a cable connection junction cavity. There is no light directed upward or forward into the eye. This luminaire features a stainless steel reflector for better light projection.



## Ordering Information

### Luminaire Type

MOUSESQ - Mouse Lite Square

### Flange Option

SBZ - Solid Bronze  
SS - 316 Stainless Steel

### Accessories

CJK150 - Cable Joint Kit  
/R - Retro™ Transformer  
110/240-12 volt  
For an alternative LED option start at page 10.4

Ordering Example MOUSESQ SS - Mouse Lite Square in 316 Stainless Steel

MOUSESQ/R SBZ - Mouse Lite Square Retro™ in Solid Bronze  
(Accessories ordered separately)



### Luminaire Construction

CNC finished machined from one of the following metals:

Investment cast in bronze with forged brass mounting plate.

Investment cast in 316 stainless steel with investment cast 316 stainless steel mounting plate.

### Mounting

Mounted using two countersunk phillips head screws directly into the mounting surface.

### Features

#### Lens:

3mm (1/8") frosted tempered shatter resistant glass.

Life Time Warranty.

#### Gasket:

Nytrol 150°C (302°F).

#### Lamp Holder:

G4 - 350°C (662°F) ceramic multi contact lamp holder with 180°C (356°F) silicone cables.

#### Accessories:

Cable Joint Kit (Cat. CJK150). Not approved for USA/Canada.

Retro™ transformer 110/240-12 volt (Cat. /R).

### Standard

IP66 AS/NZS61046  UL1838

### Luminaire Weight

12 volt BZ .820kg (1lb 12oz)

SS .750kg (1lb 10oz)

Retro™ BZ .920kg (2lb)

SS .850kg (1lb 13oz)

### Power Supply

Inground or Wall Mount Transformer: not included.

### USA and Canada:

Wall Mount Transformer: not included.

### RETRO™

HUNZA™ 110/240-12 volt ac silicone encapsulated electronic transformer built into the base.

### Luminaire: supplied with

G4 5, 10, 20 watt lamp max.

Retro™ G4 10, 20 watt lamp max.

**LED** - Refer sheet no. 10.4

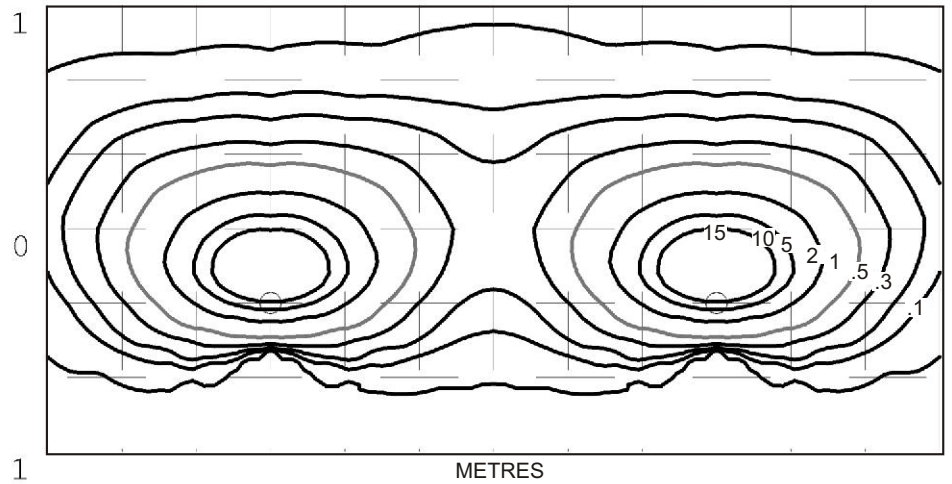
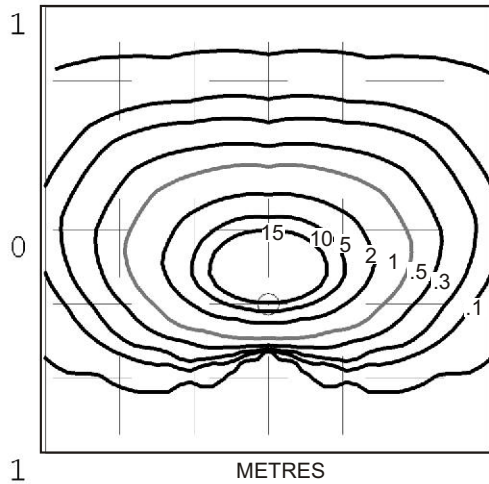
### USA and Canada:

G4 5, 10 watt lamp max.

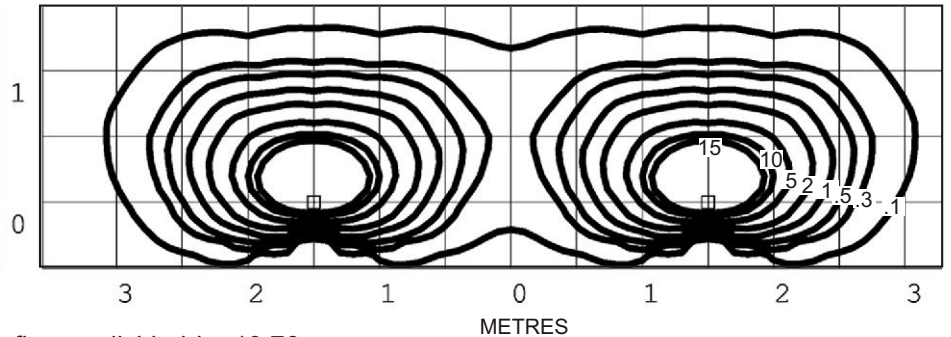
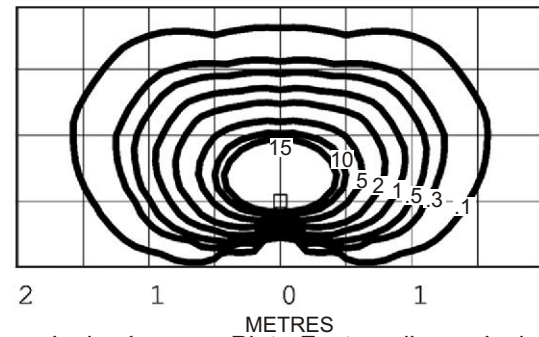
Retro™ G4 5, 10 watt lamp max.

**LED** - Refer sheet no. 10.4

Mouse Lite Square 10 watt G4 Bi-Pin lamp - Lens height 400mm (15¾")



Mouse Lite Square 20 watt G4 Bi-Pin lamp - Lens height 400mm (15¾")



Isolux Lumens Plot - Footcandles = Isolux figures divided by 10.76

**HUNZA**® PURE OUTDOOR LIGHTING

**HUNZA FACTORY**  
130 Felton Mathew Ave  
Glen Innes  
Auckland 1740  
New Zealand

Ph: 64-9-528 9471  
Fax: 64-9-528 9361  
hunza@hunza.co.nz  
www.hunza.co.nz

**INTERNATIONAL CONTACTS:**  
www.hunza.co.nz/contacts.php

Specifications may change without notice.  
Manufactured in New Zealand.

© 2009 Hunza Holdings Ltd.

Ver 1.4