

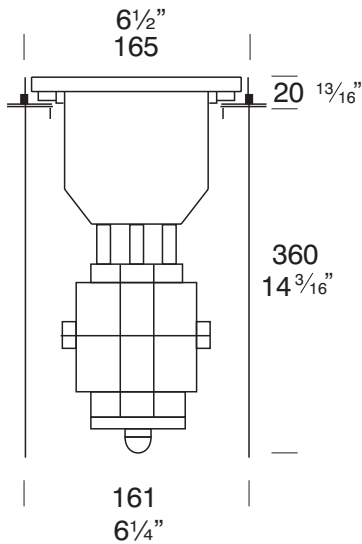
Inground 1-11MH

Cat. No. IG1-11MH



The Inground 1-11MH has a fully adjustable gimble. Designed for use with MR16 GX10 Metal Halide lamps they are highly energy efficient light sources using less energy and out putting 2 - 3 times the light of a halogen lamp. The luminaire can be driven over at 10km max (6 mph) maximum vehicle weight 1500 kg (3000lbs) or walked upon without damaging it and it has a 'Flush Fit' lens which stops water pooling and depositing dirt on the lens.

The Inground 1-11gm is supplied with a mounting canister. The lamp can be directed (up to 45 degrees from horizontal) without the need to remove the fitting from the canister due to the vandal-resistant four allen head screw fixing system which attaches the flange to the body of the luminaire.



Ordering Information

Luminaire Type

IG1-11MH - Inground 1-11

Flange Option

BZ - Bronze
SS - 316 Stainless Steel

Body

Black only

Accessories

CJK150 - Cable Joint Kit
DFL - Frosted Lens
LSL - Lineal Spread Lens

Ordering Example: IG1-11MH SS - Inground 1-11MH with 316 Stainless Steel flange.

DFL - Frosted Lens

(Accessories ordered separately)



Design Patent Pending



FACTORY: Ph: 64-9-528 9471 Fax: 64-9-528 9361.

USA: Ph. 310 560 7310 Fax. 1 877 692 4589.

hunza@hunza.co.nz www.hunza.co.nz

Specifications may change without notice.

130 Felton Mathew Ave, Glen Innes, Auckland, New Zealand.

3237 Long Island St, W. Sacramento, California 95691, USA.

Manufactured in New Zealand.

Ver 1.3

© 2007 Hunza Holdings Ltd

Luminaire Construction

Body

Cast from virgin high corrosion resistant CC401 low copper aluminium alloy, with chromate substrate and high UV resistant black polyester powder coat.

Flanges

The flange is attached to the body by four 316 stainless steel allen head anti vandal screws and is available in either -

Solid bronze -170mm (6 1/2") bar.

Solid 316 Stainless Steel 170mm (6 1/2") rod.

Mounting

The Inground 1-11gm is supplied with a mounting canister for casting in concrete. The fitting can be driven over or walked upon without damaging it. Maximum drive over speed 10 km/h (6 mph) and maximum vehicle weight 1500 kg (3300lbs).

Features

Lens:

12mm (1/2") thick 'Flush Fit' clear tempered shatter resistant glass.

Life Time Warranty

Gasket:

Silicone, iron impregnated 220°C (428°F).

Lamp Holder:

GX10 - 350°C (662°F) ceramic multi contact lamp holder with 250°C (480°F) teflon cables.

Accessories:

Cable Joint Kit (Cat. CJK150).

Lineal Spread Lens (Cat. LSL)

Frosted Lens (Cat. DFL).

Standards

IP66 AS/NZS60598.2.2



UL1598

Luminaire Weight

4.8kg (10lb 8oz)

Power Supply

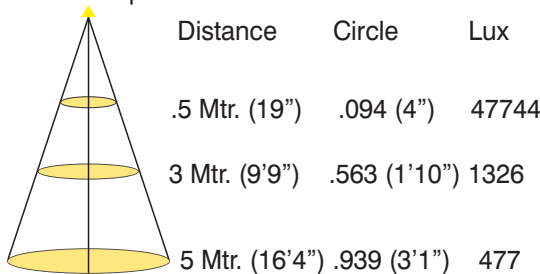
Ballast built in: 230 - 240 volt ac 50Hz.

USA/ Canada

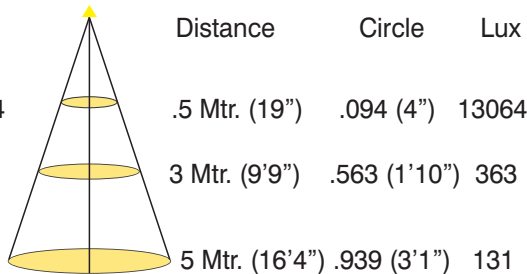
Ballast built in: 120 volt ac 60Hz.

Luminaire: supplied with MR16 GX10 20 watt M156 lamp

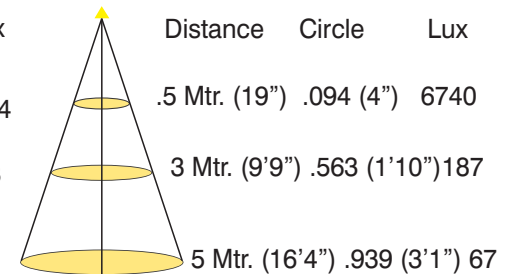
10° Lamp



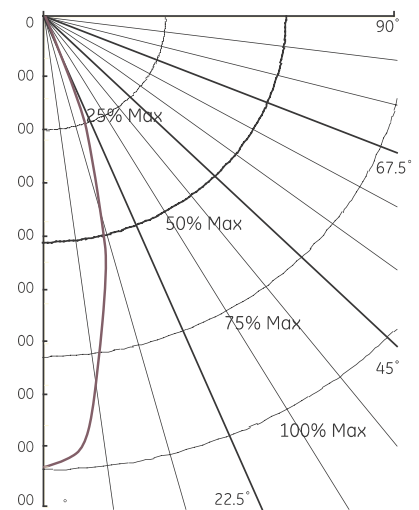
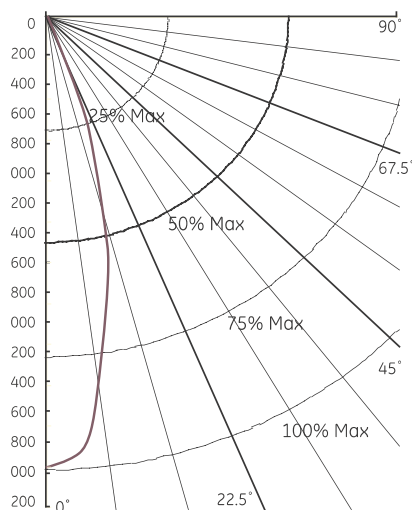
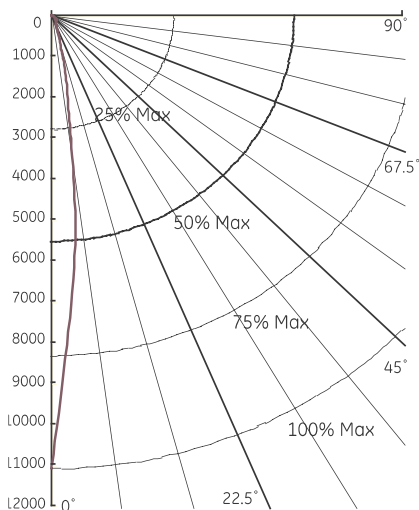
24° Lamp



45° Lamp



Distribution of Luminous Intensity. Diagrams show polar light intensity curves and beam angles for vertical base up orientation



FACTORY: Ph: 64-9-528 9471 Fax: 64-9-528 9361.

USA: Ph. 310 560 7310 Fax. 1 877 692 4589.

hunza@hunza.co.nz www.hunza.co.nz

Specifications may change without notice.

130 Felton Mathew Ave, Glen Innes, Auckland, New Zealand.

3237 Long Island St, W. Sacramento, California 95691, USA.

Manufactured in New Zealand.

© 2007 Hunza Holdings Ltd

Ver 1.3