

BOLLARD LUMINAIRES INSTALLATION INSTRUCTIONS

NOTE: THESE INSTRUCTIONS MUST NOT CONTRAVENE YOUR LOCAL ELECTRICAL AUTHORITY REGULATIONS, WITH WHICH ALL INSTALLATIONS HERE IN MUST COMPLY. PLEASE KEEP INSTRUCTIONS FOR FUTURE REFERENCE.

BOLLARD 300 - Is simple and easy to install as it has a spike on the bottom which can be pushed into the ground wherever you desire light. Place the Bollard on the ground where you wish to install it and then run the low voltage cable from the transformer (if the transformer is to be buried - installation of the transformer must be carried out by a licenced electrician to meet local Electrical Authority Regulations) to the Bollard(s), each cable connection must be waterproof using heavy walled, adhesive lined heat shrink to prevent water leaking into the cable joint. Once this is completed stand the Bollard(s) up and push into the ground.

BOLLARD 700 - Run the low voltage cable from the transformer (if the transformer is to be buried - installation of the transformer must be carried out by a licenced electrician to meet local Electrical Authority Regulations) to the bollard(s). Make a slurry of concrete, make sure there is at least 500mm of low voltage cable protruding out from the concrete slurry. Unscrew the grub screws and remove the bottom section of Bollard below the lamp holder section and pull the low voltage cable through it, push it into the concrete so that the drain hole is not covered, making sure that it is in a vertical position before the concrete sets. Make a waterproof connection using heavy walled adhesive lined heat shrink, between the lamp holder section to the low voltage cable protruding from the bollard pole. Assemble the lamp holder section onto the bottom section, secure with stainless steel grub screws.

BOLLARD 300 and 700 FLANGE MOUNT - Remove stainless steel grub screws and detach end cap. Apply silicon around the 25mm hole in the bottom of the end cap and mount end cap to deck/tiles etc, using stainless steel screws provided. Connect luminaire making a waterproof connection using heavy walled adhesive lined heat shrink, to the low voltage cable. Secure the luminaire to the end cap using the stainless steel grub screws provided.

Recommendation:

Run all low voltage cables in flexible conduit for extra protection. Use Hunza Cable Joint Kit CJK#150. It is recommended that high quality lamps are used when replacing lamps.

WARNING: Take care to place luminaire in a suitably safe position due to operating temperature of luminaire.

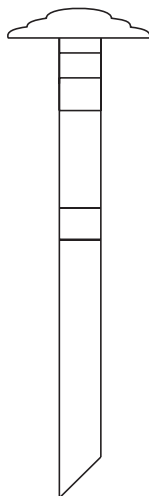
Stainless Steel Maintenance: To maintain the finish of 316 stainless steel it is recommended to wash the luminaire with water from time to time to stop salt and corrosive elements building up. If tea staining appears, a commercially available stainless steel cleaner is recommended to remove this.

LAMP CHANGING

CAUTION: Make sure that the power to the luminaire is switched off before attempting to change the lamp. Beware of hot luminaire and lamp. Make absolutely sure when changing lamps that the correct wattage lamp is installed. Incorrect wattage lamps may cause HUNZA™ IG series transformers to overload causing them to heat up and turn the luminaires off and on.

Lamp Changing Sequence (MR16)

Only use open faced lamps, not glass covered lamps. Unscrew lens ring, remove gasket and lens. Pull lamp forward until the ceramic lamp holder appears. Hold lamp holder in one hand and remove lamp with other hand very carefully. Do not touch the glass capsule in the middle of the reflector when pushing the lamp back into the ceramic lamp holder.



BOLLARD RETRO™ LUMINAIRES INSTALLATION INSTRUCTIONS

NOTE: THESE INSTRUCTIONS MUST NOT CONTRAVENE YOUR LOCAL ELECTRICAL AUTHORITY REGULATIONS, WITH WHICH ALL INSTALLATIONS HERE IN MUST COMPLY. PLEASE KEEP INSTRUCTIONS FOR FUTURE REFERENCE. MUST BE INSTALLED BY A LICENCED ELECTRICIAN

Make a slurry of concrete, make sure the conduit is protruding out of the concrete slurry and there is at least 500mm of cable protruding out of the conduit. Unscrew the grub screws and remove the bottom section of tube below the lamp holder section and push it into the concrete slurry no more than 150mm, over the conduit and pull the cable through the tube. Make sure that there is concrete in the bottom of the pole and that the pole is vertical before the concrete sets. There must be concrete in the bottom of the tube to stop moisture build up. Unscrew the orange PVC connection on the bottom of the lamp holder section and slide it over the 230/240 volt supply cable. Connect the phase (active) wire to the RED wire of the luminaire and neutral wire to BLACK wire of the luminaire. Screw the orange PVC connection back onto the orange nipple of the luminaire and fit the lamp holder section onto the tube using the stainless steel grub screws provided.

BOLLARD 700 RETRO FLANGE MOUNT

Remove stainless steel grub screws and detach end cap. Apply silicon around the 25mm hole in the bottom of the end cap and mount end cap to deck/tiles etc, using stainless steel screws provided. Unscrew the orange PVC connection on the bottom of the lamp holder section and slide it over the 230/240 volt supply cable. Connect the phase (active) wire to the RED wire of the luminaire and neutral wire to BLACK wire of the luminaire. Secure the luminaire to the end cap using the stainless steel grub screws provided. Stainless Steel Maintenance: To maintain the finish of 316 stainless steel it is recommended to wash the luminaire with water from time to time to stop salt and corrosive elements building up. If tea staining appears, a commercially available stainless steel cleaner is recommended to remove this.

DO NOT use a trailing edge ac. dimmer control. Only a leading edge dimmer unit is suitable.

DO NOT connect in close proximity to inductive loads. eg. air conditioning systems, water pumps etc. without appropriate mains filtering. Use a suppression interface module for every six luminaires connected to the circuit.

DO NOT push the luminaire more than 150mm into concrete slurry.

DO NOT carry out a Megger or insulation test on a circuit with a luminaire connected to it.

DO NOT connect to a circuit that has an electronic soft start motor starter on it.

DO NOT connect to a Clipsal C-Bus2, or any other System type without using a suppression interface module.

WARNING: Take care to place luminaire in a suitably safe position due to operating temperature of the luminaire.

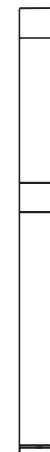
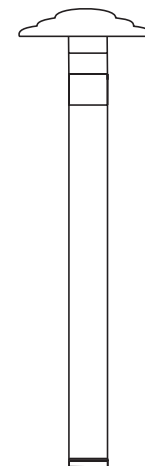
NOTE: Due to the nature of electronics, the ambient temperature of the installation location must be considered carefully as the luminaire may not operate reliably at temperatures below -8°C (18°F)

LAMP CHANGING

CAUTION: Make sure that the power to the luminaire is switched off before attempting to change the lamp. Beware of hot luminaire and lamp.

Lamp Changing Sequence (MR16)

Only use open faced lamps, not glass covered lamps. Unscrew lens ring, remove gasket and lens. Pull lamp forward until the ceramic lamp holder appears. Hold lamp holder in one hand and remove lamp with other hand very carefully. Do not touch the glass capsule in the middle of the reflector when pushing the lamp back into the ceramic lamp holder.



THE “MOUSE LITE™” LUMINAIRE INSTALLATION INSTRUCTIONS

NOTE: THESE INSTRUCTIONS MUST NOT CONTRAVENE YOUR LOCAL ELECTRICAL AUTHORITY REGULATIONS, WITH WHICH ALL INSTALLATIONS HERE IN MUST COMPLY. PLEASE KEEP INSTRUCTIONS FOR FUTURE REFERENCE.

The Mouse Lite™ is designed as a surface mount luminaire. Unscrew the mounting plate from the luminaire. Apply sufficient sealant to the groove on the back of the mounting plate to seal against the wall. Screw the mounting plate to the wall. Make a water proof connection using heavy walled adhesive lined heat shrink, between the luminaire cables and the low voltage supply cables. Check that gasket is in the correct position. Screw the luminaire onto the back plate.

Warning - Take care to place the luminaire in a suitably safe position, due to the operating temperature of the luminaire.

Recommendation:

Use Hunza CJK#150 Cable Joint Kit.

It is recommended that high quality halogen capsules are used when replacing existing capsules.

HALOGEN CAPSULE CHANGING

CAUTION: Make sure that the power to the luminaire is switched off before attempting to change the lamp. Beware of hot luminaire and lamp. Make absolutely sure when changing lamps that the correct wattage lamp is installed. If an incorrect wattage is used it may cause HUNZA™ IG series transformers to overload causing the transformers to heat up and turn the luminaires off and on.

WARNING: Do not touch halogen capsule with bare fingers, leave plastic bag over the capsule & push into the lamp holder. Then remove plastic bag before switching fitting on.

Maximum Wattage 20 G4 Halogen Capsule.

Stainless Steel Maintenance: To maintain the finish of 316 stainless steel it is recommended to wash the luminaire with water from time to time to stop salt and corrosive elements building up. If tea staining appears, a commercially available stainless steel cleaner is recommended to remove this.

DECK LITE LUMINAIRE INSTALLATION INSTRUCTIONS

NOTE: THESE INSTRUCTIONS MUST NOT CONTRAVENE YOUR LOCAL ELECTRICAL AUTHORITY REGULATIONS, WITH WHICH ALL INSTALLATIONS HERE IN MUST COMPLY. PLEASE KEEP INSTRUCTIONS FOR FUTURE REFERENCE.

Remove stainless steel grub screws and detach end cap. Apply silicon around the 25mm hole in the bottom of the end cap and mount end cap to deck/tiles etc, using stainless steel screws provided. Connect luminaire making a waterproof connection using heavy walled adhesive lined heat shrink, to the low voltage cable. Secure the luminaire to the end cap using the stainless steel grub screws provided.

NOTE - Do not use the anti glare hood to remove lens section for lamp replacement. Place hand on acrylic lens and unscrew.

Recommendation:

Run all low voltage cables in flexible conduit for extra protection.

Use Hunza CJK#150 Cable Joint Kit.

It is recommended that high quality halogen capsules are used when replacing capsules.

HALOGEN CAPSULE CHANGING

CAUTION: Make sure that the power to the luminaire is switched off before attempting to change the lamp.

Beware of hot luminaire and lamp. Make absolutely sure when changing lamps that the correct wattage lamp is installed. Incorrect wattage halogen capsules may cause HUNZA™ IG series transformers to overload causing the transformers to heat up and turn the luminaires off and on.

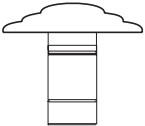
WARNING: Do not touch halogen capsule with bare fingers, leave plastic bag over the capsule & push into the lamp holder. Then remove plastic bag before switching fitting on.

Maximum Wattage 20 G4 Halogen Capsule.

Stainless Steel Maintenance: To maintain the finish of 316 stainless steel it is recommended to wash the luminaire with water from time to time to stop salt and corrosive elements building up. If tea staining appears, a commercially available stainless steel cleaner is recommended to remove this.

LAMP DISPOSAL

Metal Halide and Fluorescent lamps contain small amounts of Mercury which can be harmful to the environment if the lamp is broken. Please contact your local authorities for information on the disposal of Metal Halide and Fluorescent lamps to ensure they are disposed of correctly.



DRIVEWAY LITE LUMINAIRES INSTALLATION INSTRUCTIONS

NOTE: THESE INSTRUCTIONS MUST NOT CONTRAVENE YOUR LOCAL ELECTRICAL AUTHORITY REGULATIONS, WITH WHICH ALL INSTALLATIONS HERE IN MUST COMPLY. PLEASE KEEP INSTRUCTIONS FOR FUTURE REFERENCE.

The Driveway Lite is designed to be mounted flush with the finished level of the concrete driveway, paving or asphalt etc. The flange is removed by using the allen key supplied and the fitting is fixed in the mounting canister by two screws. Place the mounting canister in the desired position. Make certain that there is drainage material around and beneath the mounting canister to stop water building up inside the canister. Run the low voltage cable from the transformer (if the transformer is to be buried - installation of the transformer must be carried out by a licenced electrician to meet local Electrical Authority Regulations) into the Driveway canister. A waterproof cable connection must be made using a heavy walled adhesive lined heat shrink to prevent water leaking into the cable joint. Remove the Driveway Lite flange using the allen key supplied and adjust lamp to desired angle. Place luminaire into canister and screw into position with screws provided. Replace flange.

Recommendation:

Run all low voltage cables in flexible conduit for extra protection.

Use Hunza Cable Joint Kit CJK#150.

It is recommended that high quality lamps are used when replacing lamps.

WARNING: Take care to place luminaire in a suitably safe position due to operating temperature of luminaire. Driveway Lite lens must not be covered with any flammable material. Maximum drive over speed 10 km/hr.

Stainless Steel Maintenance: To maintain the finish of 316 stainless steel it is recommended to wash the luminaire with water from time to time to stop salt and corrosive elements building up. If tea staining appears, a commercially available stainless steel cleaner is recommended to remove this.

LAMP CHANGING

CAUTION: Make sure that the power to the luminaire is switched off before attempting to change the lamp. Beware of hot luminaire and lamp. Make absolutely sure when changing lamps that the correct wattage lamp is installed. i.e. 50 watt lamps are most common. Incorrect wattage lamps may cause the transformers to overload causing them to heat up and turn the luminaires off.

Gasket and lens sequence for Driveway Lite: Place gasket into gasket groove in fitting and put lens on top. Use allen key supplied to tighten the 3 allen head screws to hold the flange in place.

LAMP DISPOSAL

Metal Halide and Fluorescent lamps contain small amounts of Mercury which can be harmful to the environment if the lamp is broken. Please contact your local authorities for information on the disposal of Metal Halide and Fluorescent lamps to ensure they are disposed of correctly.

LAWN LITE LUMINAIRES INSTALLATION INSTRUCTIONS

NOTE: THESE INSTRUCTIONS MUST NOT CONTRAVENE YOUR LOCAL ELECTRICAL AUTHORITY REGULATIONS, WITH WHICH ALL INSTALLATIONS HERE IN MUST COMPLY. PLEASE KEEP INSTRUCTIONS FOR FUTURE REFERENCE.

The Lawn Lite is designed to be set into the ground. Dig a small hole which aligns the Lawn Lite flange just below the ground level. Run the low voltage cable from the transformer (if the transformer is to be buried, - installation of the transformer must be carried out by a licenced electrician to meet local Electrical Authority Regulations) to the Lawn Lite. A waterproof cable connection must be made using a heavy walled adhesive lined heat shrink to prevent water leaking into the cable joint. To adjust lamp to desired angle, remove the flange using the allen key supplied.

Deck Mounting Version - Cut a 115mm hole in the timber. A waterproof connection must be made using a heavy walled adhesive lined heat shrink, between the supply cable and the fitting. Using the allen key supplied with the luminaire, remove the flange. Screw the luminaire to the timber with the screws supplied. Replace flange onto luminaire.

Recommendation:

Run all low voltage cables in flexible conduit for extra protection.

Use Hunza Cable Joint Kit CJK#150.

It is recommended that high quality lamps are used when replacing lamps.

WARNING: Take care to place luminaire in a suitably safe position due to operating temperature of luminaire. Lawn Lite lens must not be covered with any flammable material.

The Lawn Lite deck mount version is not suitable for driving over.

Stainless Steel Maintenance: To maintain the finish of 316 stainless steel it is recommended to wash the luminaire with water from time to time to stop salt and corrosive elements building up. If tea staining appears, a commercially available stainless steel cleaner is recommended to remove this.

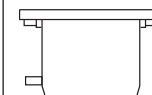
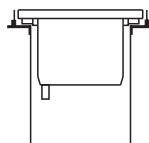
LAMP CHANGING

CAUTION: Make sure that the power to the luminaire is switched off before attempting to change the lamp. Beware of hot luminaire and lamp. Make absolutely sure when changing lamps that the correct wattage lamp is installed. i.e. 50 watt lamps are most common. Incorrect wattage lamps may cause the transformers to overload causing the transformers to heat up and turn the luminaires off.

Gasket and lens sequence for Driveway Lite: Place gasket into gasket groove in fitting and put lens on top. Use allen key supplied to tighten the 3 allen head screws to hold the flange in place.

LAMP DISPOSAL

Metal Halide and Fluorescent lamps contain small amounts of Mercury which can be harmful to the environment if the lamp is broken. Please contact your local authorities for information on the disposal of Metal Halide and Fluorescent lamps to ensure they are disposed of correctly.



EURO SPOT LITE, FERN LITE, SPIKE SPOT, SPIKE SPOT ADJUSTABLE & TWIN BAR LITE LUMINAIRES

INSTALLATION INSTRUCTIONS

NOTE: THESE INSTRUCTIONS MUST NOT CONTRAVENE YOUR LOCAL ELECTRICAL AUTHORITY REGULATIONS, WITH WHICH ALL INSTALLATIONS HERE IN MUST COMPLY. PLEASE KEEP INSTRUCTIONS FOR FUTURE REFERENCE.

These luminaires are simple and easy to install as they have spikes on the bottom which can be pushed into the ground where ever you desire light. Place the Euro Spot, Fern Lite, Spike Spot, Spike Spot Adjustable or Twin Bar Lite Luminaires on the ground where you wish to install and then run the low voltage cable from the transformer (if the transformer is to be buried - installation of the transformer must be carried out by a licenced electrician to meet local Electrical Authority Regulations) to the Euro Spot(s), Spike Spot(s), Fern Lite(s) or Twin Bar Lite(s). All cable connections must be made using heavy walled adhesive lined heat shrink to prevent water leaking into the cable joint. Once this is completed push the Euro Spot(s), Spike Spot(s), Fern Lite(s) or Twin Bar Lite(s) into the ground in the desired position.

Recommendation:

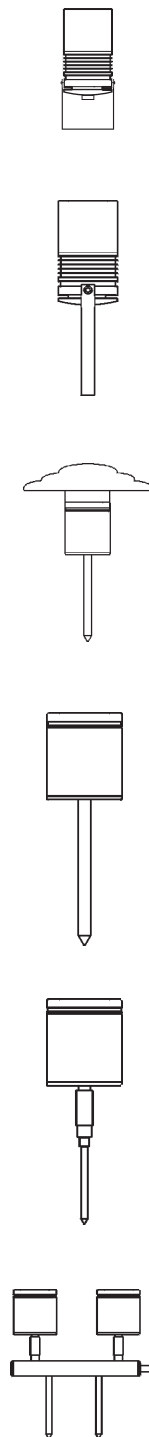
Run all low voltage cables in flexible conduit for extra protection.

Use Hunza CJK#150 Cable Joint Kit.

It is recommended that high quality lamps are used when replacing lamps. Do not over tighten lens ring as this will make removal difficult and may cause lamp to break. Leave extra cable to allow the luminaire to be moved as foliage grows in size.

Warning - Take care to place luminaire in a suitable, safe position, due to operating temperature of luminaire.

Stainless Steel Maintenance: To maintain the finish of 316 stainless steel it is recommended to wash the luminaire with water from time to time to stop salt and corrosive elements building up. If tea staining appears, a commercially available stainless steel cleaner is recommended to remove this.



LAMP CHANGING

CAUTION: Make sure that the power to the luminaire is switched off before attempting to change the lamp.

Beware, the luminaire and lamp may be hot. It is absolutely critical that when changing lamps that the correct wattage lamp is installed. Incorrect wattage lamps or halogen capsules may cause HUNZA™ IG series transformers to overload causing the transformers to heat up and turn the luminaires off and on.

HALOGEN CAPSULE CHANGING (FERN LITE)

Do not touch halogen capsule with bare fingers, leave plastic bag over the capsule and push the capsule into the lamp holder. Then remove plastic bag before switching fitting on. MAXIMUM WATTAGE 20 WATT G4 HALOGEN CAPSULE.

GLARE GUARD INSTALLATION (NOT EURO SPOT)

Carefully remove lens ring, making sure not to drop the glass lens (as this may cause damage), keeping gasket in place. Hold body of luminaire tightly and screw Glare Guard ring onto light luminaire. Still holding body of luminaire tightly rotate glare guard to desired position.

Lamp Changing Sequence (MR16)

Only use open faced lamps, not glass covered lamps, as glass covered lamps may cause the luminaire to leak. Unscrew the lens ring, remove the gasket and lens. Pull lamp forward until the ceramic lamp holder becomes visible. Hold the lamp holder in one hand and remove the lamp with the other hand very carefully. Do not touch the glass capsule in the middle of the reflector when pushing the lamp back into the ceramic lamp holder. When replacing the gasket and lens, make sure there is no dirt or grit on the gasket. Dirt or grit on the gasket may cause luminaire to leak.

Euro Spot Lite Lamp Changing Sequence (MR11)

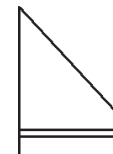
Unscrew the lens section of the luminaire & remove lamp. Do not touch the glass capsule in the middle of the reflector when pushing the lamp back into the ceramic lamp holder. Refit the lens section onto the luminaire & tighten.

Gasket and lens sequence (Not Euro Spot)

Place lens on top of lamp and put orange gasket on top of lens. Screw on lens ring or flange.

LAMP DISPOSAL

Metal Halide and Fluorescent lamps contain small amounts of Mercury which can be harmful to the environment if the lamp is broken. Please contact your local authorities for information on the disposal of Metal Halide and Fluorescent lamps to ensure they are disposed of correctly.



EURO WALL SPOT, PAGODA LITE, TWIN WALL SPOT, WALL SPOT, WALL DOWN LITE, WALL SPOT LUMINAIRES

INSTALLATION INSTRUCTIONS

NOTE: THESE INSTRUCTIONS MUST NOT CONTRAVENE YOUR LOCAL ELECTRICAL AUTHORITY REGULATIONS, WITH WHICH ALL INSTALLATIONS HERE IN MUST COMPLY. PLEASE KEEP INSTRUCTIONS FOR FUTURE REFERENCE.

Due to the many and varying surfaces on buildings to which luminaires can be affixed, it is not possible to supply a gasket that will seal on brick concrete wood etc. Hence we advise using a silicone sealant that will not only adhere to the Wall Luminaire but also bond to the surface to which the fitting is fixed. Make a waterproof connection using heavy walled adhesive lined heat shrink. Make sure to use the rubber washers supplied under the mounting screws to stop water leaking into the base of the luminaire. If there is any possibility of water leaking down the cable trace, the cable entry point must be waterproof sealed.

Recommendation:

Run all low voltage cables in flexible conduit for extra protection.

Use Hunza Cable Joint Kit CJK#150.

It is recommended that high quality lamps or halogen capsules are used when replacing lamps or halogen capsules. Do not over tighten lens ring as this will make removal difficult and may cause lamp to break.

Warning: Make sure there is no possibility of water leaking down the cable track into the back of this luminaire.

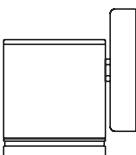
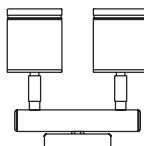
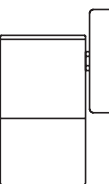
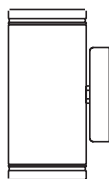
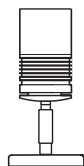
Warning: Twin lamp luminaires i.e. Twin Wall Spot can be supplied with two 50 watt lamps or two 20 watt lamps (check inside luminaire for 20 watt warning sticker) make certain that these luminaires are wired in a matched system. A transformer with a greater wattage output than is required will over-voltage the lamp and dramatically reduce lamp life. Transformer output must match lamp wattage load. It is possible to wire wall mounted luminaires using standard internal use lighting transformers if the transformers are mounted inside. The HUNZA™ H20 & H50 series transformers are designed for this task and also have a Five Year Replacement Warranty. Or use the HUNZA™ Wallmount series transformers.

WARNING: Take care to place luminaire in a suitably safe position due to operating temperature of the luminaire.

Stainless Steel Maintenance: To maintain the finish of 316 stainless steel it is recommended to wash the luminaire with water from time to time to stop salt and corrosive elements building up. If tea staining appears, a commercially available stainless steel cleaner is recommended to remove this.

LAMP CHANGING

CAUTION: Make sure that the power to the luminaire is switched off before attempting to change the lamp. Beware of hot luminaire and lamp. Make absolutely sure when changing lamps that the correct wattage lamp is installed. Incorrect wattage lamps may cause HUNZA™ IG series transformers to overload causing them to heat up and turn the luminaires off.



EURO WALL SPOT, PAGODA LITE, TWIN WALL SPOT, WALL SPOT, WALL DOWN LITE, WALL SPOT LUMINAIRES

INSTALLATION INSTRUCTIONS

NOTE: THESE INSTRUCTIONS MUST NOT CONTRAVENE YOUR LOCAL ELECTRICAL AUTHORITY REGULATIONS, WITH WHICH ALL INSTALLATIONS HERE IN MUST COMPLY. PLEASE KEEP INSTRUCTIONS FOR FUTURE REFERENCE.

HALOGEN CAPSULE CHANGING (PAGODA LITE)

CAUTION: Make sure that the power to the luminaire is switched off before attempting to change the lamp. Beware of hot luminaire and lamp. Make absolutely sure when changing lamps that the correct wattage lamp is installed. Incorrect wattage halogen capsules may cause HUNZA™ IG series transformers to overload causing the transformers to heat up and turn the luminaires off.

Warning: Do not touch halogen capsule with bare fingers, leave plastic bag over the capsule & push into the lamp holder. Then remove plastic bag before switching luminaire on. Maximum Wattage 20watt G4 Halogen Capsule.

Euro Spot Lite Lamp Changing Sequence (MR11)

Unscrew lens section of luminaire & remove lamp. Do not touch the glass capsule in the middle of the reflector when pushing lamp back into the ceramic lamp holder. Refit lens section onto the luminaire & tighten.

Lamp Changing Sequence (MR16)

Only use open faced lamps, not glass covered lamps, as glass covered lamps may cause luminaire to leak. Unscrew lens ring, remove gasket and lens. Pull lamp forward until the ceramic lamp holder appears. Hold lamp holder in one hand and remove lamp with other hand very carefully. Do not touch the glass capsule in the middle of the reflector when pushing the lamp back into the ceramic lamp holder. When replacing gasket and lens, make sure there is no dirt or grit on the gasket. Dirt or grit on the gasket may cause luminaire to leak.

Gasket and lens sequence (Not Euro Wall Spot Lite)

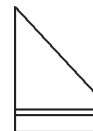
Place lens on top of lamp and put orange gasket on top of lens. Screw on lens ring.

GLARE GUARD INSTALLATION (NOT EURO WALL SPOT LITE)

Carefully remove lens ring making sure not to drop the glass lens and cause damage to it, keeping gasket in place. Hold body of luminaire tightly and screw Glare Guard ring onto light luminaire. Still holding body of luminaire tightly rotate glare guard to desired position.

LAMP DISPOSAL

Metal Halide and Fluorescent lamps contain small amounts of Mercury which can be harmful to the environment if the lamp is broken. Please contact your local authorities for information on the disposal of Metal Halide and Fluorescent lamps to ensure they are disposed of correctly.



RETRO™ EURO WALL SPOT, PAGODA LITE, PILLAR LITE, TWIN WALL SPOT, WALL DOWN LITE, WALL SPOT LUMINAIRES (with built in electronic transformers)

INSTALLATION INSTRUCTIONS

NOTE: THESE INSTRUCTIONS MUST NOT CONTRAVENE YOUR LOCAL ELECTRICAL AUTHORITY REGULATIONS, WITH WHICH ALL INSTALLATIONS HERE IN MUST COMPLY. PLEASE KEEP INSTRUCTIONS FOR FUTURE REFERENCE MUST BE INSTALLED BY A LICENCED ELECTRICIAN

Apply sufficient silicone sealant to the groove on the back of the mounting plate, to seal against the wall. Fit cables through 25mm hole (If mounted on porous material e.g. mortar or if there is any possibility of water leaking down the cable track, the cable must be sealed around the 25mm hole in the backplate to stop water building up in the transformer housing). Mount the back plate onto the wall. Connect the phase (active) wire and the Neutral wire to the terminal block of the fitting. Assemble the luminaire onto the mounting plate (check that the backplate gasket is in place) and use screws provided to secure luminaire. Make sure to use the rubber washers supplied under the mounting screws to stop water leaking into the luminaire. If there is any possibility of water leading down the cable track, the cable entry point must be waterproof sealed.

DO NOT connect in close proximity to inductive loads, eg. air conditioning systems, water pumps etc. without appropriate mains filtering. Use a suppression interface module for every six luminaires connected to the circuit.

DO NOT carry out a Megger or insulation test on a circuit with a RETRO™ luminaires connected to it.

DO NOT connect to a circuit that has an electronic soft start motor starter on it.

DO NOT mount on a horizontal surface where water may collect or pool.

DO NOT connect to any Electronic Home System without checking with the manufacturer that it is suitable to control the HUNZA™ luminaire.

Warning: Do not suspend luminaire from Red and Black cables as this may cause luminaire to leak water into the head.

NOTE: Due to the nature of electronics, the ambient temperature of the installation location must be considered carefully as the luminaire may not operate reliably at temperatures below -8°C (18°F).

Warning: Twin lamp luminaires i.e. Twin Wall Spot, Pillar Lite have a 75 watt electronic transformer operating the lamps. If two 50 watt lamps are installed the luminaire will not operate, the electronic transformer has a built in safety shut down system that will not switch the lamps on when the power is applied. If this situation occurs -

- Switch power off.
- Remove lamps and replace with two 20 watt lamps & switch power on.

WARNING: Take care to place luminaire in a suitably safe position due to operating temperature of the luminaire.

Stainless Steel Maintenance: To maintain the finish of 316 stainless steel it is recommended to wash the luminaire with water from time to time to stop salt and corrosive elements building up. If tea staining appears, a commercially available stainless steel cleaner is recommended to remove this.

LAMP DISPOSAL

Metal Halide and Fluorescent lamps contain small amounts of Mercury which can be harmful to the environment if the lamp is broken. Please contact your local authorities for information on the disposal of Metal Halide and Fluorescent lamps to ensure they are disposed of correctly.

RETRO™ EURO WALL SPOT, PAGODA LITE, PILLAR LITE, TWIN WALL SPOT, WALL DOWN LITE, WALL SPOT LUMINAIRES (with built in electronic transformers)

INSTALLATION INSTRUCTIONS

NOTE: THESE INSTRUCTIONS MUST NOT CONTRAVENE YOUR LOCAL ELECTRICAL AUTHORITY REGULATIONS, WITH WHICH ALL INSTALLATIONS HERE IN MUST COMPLY. PLEASE KEEP INSTRUCTIONS FOR FUTURE REFERENCE MUST BE INSTALLED BY A LICENCED ELECTRICIAN

LAMP CHANGING

CAUTION: Make sure that the power to the luminaire is switched off before attempting to change the lamp. Beware of hot luminaire and lamp. Make absolutely sure when changing lamps that the correct wattage lamp is installed, i.e. 50 watt lamps are most common however RETRO™ luminaires e.g. Pillar Lite, Twin Wall Spot luminaires all have 20 watt lamps installed. Incorrect wattage lamps or halogen capsules may cause RETRO™ luminaires not to illuminate due to overload.

Euro Spot Lite Lamp Changing Sequence (MR11)

Unscrew lens section of luminaire & remove lamp. Do not touch the glass capsule in the middle of the reflector when pushing lamp back into the ceramic lamp holder. Refit lens section onto the luminaire & tighten.

Lamp Changing Sequence (MR16)

Only use open faced lamps, not glass covered lamps, as glass covered lamps may cause luminaire to leak. Unscrew lens ring, remove gasket and lens. Pull lamp forward until the ceramic lamp holder appears. Hold lamp holder in one hand and remove lamp with other hand very carefully. Do not touch the glass capsule in the middle of the reflector when pushing the lamp back into the ceramic lamp holder. When replacing gasket and lens, make sure there is no dirt or grit on the gasket. Dirt or grit on the gasket may cause luminaire to leak.

Gasket and lens sequence (Not Euro Wall Spot Lite)

Place lens on top of lamp and put orange gasket on top of lens. Screw on lens ring.

It is recommended that high quality lamps are used when replacing lamps. Do not over tighten lens ring as this will make removal difficult and may cause lamp to break.

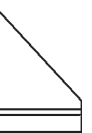
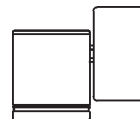
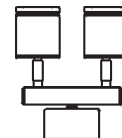
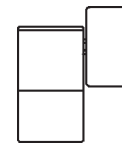
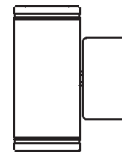
HALOGEN CAPSULE CHANGING (PAGODA LITE)

CAUTION: Make sure that the power to the luminaire is switched off before attempting to change the lamp. Beware of hot luminaire and lamp. Make absolutely sure when changing lamps that the correct wattage lamp is installed. Incorrect wattage halogen capsules may cause HUNZA™ IG series transformers to overload causing the transformers to heat up and turn the luminaires off and on.

WARNING: Do not touch halogen capsule with bare fingers, leave plastic bag over the capsule & push into the lamp holder. Then remove plastic bag before switching luminaire on. Maximum Wattage 20watt G4 Halogen Capsule.

GLARE GUARD INSTALLATION (NOT EURO WALL SPOT LITE)

Carefully remove lens ring making sure not to drop the glass lens and cause damage to it, keeping gasket in place. Hold body of luminaire tightly and screw Glare Guard ring onto light luminaire. Still holding body of luminaire tightly rotate glare guard to desired position.



FLOOR LITE, PATH LITE, STEP LITE LUMINAIRES (with canister)

INSTALLATION INSTRUCTIONS

NOTE: THESE INSTRUCTIONS MUST NOT CONTRAVENE YOUR LOCAL ELECTRICAL AUTHORITY REGULATIONS, WITH WHICH ALL INSTALLATIONS HERE IN MUST COMPLY. PLEASE KEEP INSTRUCTIONS FOR FUTURE REFERENCE.

Remove the luminaire from the gold coloured canister. Place canister in the desired position. Make sure that the top of the canister is at the finished floor height. Fit conduit to the canister making sure all joints are water tight and pre wire with low voltage cable. Make sure the top of the canister is sealed while the concrete is being poured. Make a waterproof connection using heavy walled adhesive lined heat shrink, to the low voltage cable and slide luminaire into canister.

Recommendation:

Run all low voltage cables in flexible conduit for extra protection. Use Hunza Cable Joint Kit CJK#150. 20 watt lamps are strongly recommended due to heat from lamp.

Note: This luminaire is NOT suitable for driving over.

Warning: Take care to place luminaire in a suitably safe position, due to operating temperature of the luminaire.

PATH LITE or STEP LITE WITH CANISTER IP68

Fix canister into the desired position. Make sure that the top of the canister is at the finished floor height or step lite canister is flush with the finished wall line. Fit conduit to the canister making sure all joints are water tight and pre wire with low voltage cable. Make sure the top of the canister is sealed while the concrete is being poured. Make a waterproof connection using heavy walled adhesive lined heat shrink, to the low voltage cable and slide luminaire into canister.

Recommendation:

Run all low voltage cables in flexible conduit for extra protection. Use Hunza Cable Joint Kit CJK#150. 20 watt lamps are strongly recommended due to heat from lamp.

Note: Path Lite is not suitable for driving over.

Warning: Take care to place luminaire in a suitably safe position, due to operating temperature of the luminaire.

Stainless Steel Maintenance: To maintain the finish of 316 stainless steel it is recommended to wash the luminaire with water from time to time to stop salt and corrosive elements building up. If tea staining appears, a commercially available stainless steel cleaner is recommended to remove this.

LAMP CHANGING

CAUTION: Make sure that the power to the luminaire is switched off before attempting to change the lamp. Beware of hot luminaire and lamp. Make absolutely sure when changing lamps that the correct wattage lamp is installed. Incorrect wattage lamps may cause HUNZA™ IG series transformers to overload causing them to heat up and turn the luminaires off.

Lamp Changing Sequence (MR16)

Only use open faced lamps, not glass covered lamps, as glass covered lamps may cause the luminaire to leak. Unscrew flange, remove gasket and lens. Pull lamp forward until the ceramic lamp holder appears. Hold lamp holder in one hand and remove lamp with other hand very carefully. Do not touch the glass capsule in the middle of the reflector when pushing the lamp back into the ceramic lamp holder. When replacing gasket and lens, make sure there is no dirt or grit on the gasket. Dirt or grit on the gasket may cause luminaire to leak.

Gasket and lens sequence

Place lens on top of lamp and put orange gasket on top of lens. Screw on flange. It is recommended that high quality lamps are used when replacing lamps. Do not over tighten flange as this will make removal difficult and may cause lamp to break.

STEP LITE, STEP LITE EYELID, PATH LITE LUMINAIRES (no canister)

INSTALLATION INSTRUCTIONS

NOTE: THESE INSTRUCTIONS MUST NOT CONTRAVENE YOUR LOCAL ELECTRICAL AUTHORITY REGULATIONS, WITH WHICH ALL INSTALLATIONS HERE IN MUST COMPLY. PLEASE KEEP INSTRUCTIONS FOR FUTURE REFERENCE.

Drill a 65mm diameter hole (deep enough to house sufficient cable to facilitate lamp changing) and two mounting holes at 75mm centres. Run the low voltage cable from the transformer (if the transformer is to be buried - installation of the transformer must be carried out by a licenced electrician to meet local Electrical Authority Regulations) to the Step Lite. Make a water proof connection using heavy walled adhesive lined heat shrink. Coil up a small amount of cable behind the fitting to allow it to be removed for lamp changing and screw into position using rawlplugs and screws provided.

Recommendation:

Run all low voltage cables in flexible conduit for extra protection. Use Hunza Cable Joint Kit CJK#150.

Warning: Take care to place the luminaire in a suitably safe position, due to operating temperature of the luminaire.

Stainless Steel Maintenance: To maintain the finish of 316 stainless steel it is recommended to wash the luminaire with water from time to time to stop salt and corrosive elements building up. If tea staining appears, a commercially available stainless steel cleaner is recommended to remove this.

LAMP CHANGING

CAUTION: Make sure that the power to the luminaire is switched off before attempting to change the lamp. Beware of hot luminaire and lamp. Make absolutely sure when changing lamps that the correct wattage lamp is installed. Incorrect wattage lamps may cause HUNZA™ IG series transformers to overload causing them to heat up and turn the luminaires off.

Lamp Changing Sequence (MR16)

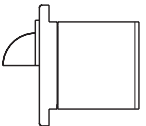
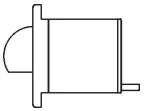
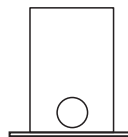
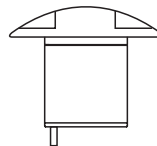
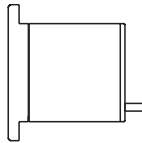
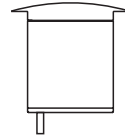
Only use open faced lamps, not glass covered lamps, as glass covered lamps may cause luminaire to leak. Unscrew flange, remove gasket and lens. Pull lamp forward until the ceramic lamp holder appears. Hold lamp holder in one hand and remove lamp with other hand very carefully. Do not touch the glass capsule in the middle of the reflector when pushing the lamp back into the ceramic lamp holder. When replacing gasket and lens, make sure there is no dirt or grit on the gasket. Dirt or grit on the gasket may cause luminaire to leak.

Gasket and lens sequence

Place lens on top of lamp and put orange gasket on top of lens. Screw on flange. It is recommended that high quality lamps are used when replacing lamps. Do not over tighten flange as this will make removal difficult and may cause lamp to break.

LAMP DISPOSAL

Metal Halide and Fluorescent lamps contain small amounts of Mercury which can be harmful to the environment if the lamp is broken. Please contact your local authorities for information on the disposal of Metal Halide and Fluorescent lamps to ensure they are disposed of correctly.



INGROUND 1-11 LUMINAIRE INSTALLATION INSTRUCTIONS

NOTE: THESE INSTRUCTIONS MUST NOT CONTRAVENE YOUR LOCAL ELECTRICAL AUTHORITY REGULATIONS, WITH WHICH ALL INSTALLATIONS HERE IN MUST COMPLY. PLEASE KEEP INSTRUCTIONS FOR FUTURE REFERENCE.

The Inground 1-11 is designed to be mounted level with the finished level of concrete, paving, asphalt or ground level etc. The flange is removed by using the allen key supplied to remove the four allen head screws in the flange and the luminaire is fixed into the mounting canister by two self tapping screws.

Remove the luminaire from the mounting canister and place the mounting canister in the desired position. Make certain that there is drainage material beneath the mounting canister to stop water building up inside the mounting canister. If the luminaire is to be driven over-concrete must be placed around the mounting canister and up under canister the rim to take the weight of the vehicle. Drive over speed is limited to 10 kph and the vehicle weight must not exceed 1500kg. Connections to the mains must be carried out by a licensed electrician. A waterproof cable joint must be made to stop the luminaire drawing water up the input cable. Fix the luminaire into the mounting canister using the two self tapping screws provided and adjust the lamp to the desired angle, replace lens and flange.

DECK MOUNTING VERSION

Cut a 165mm hole in the deck timber. Fix the luminaire into the deck timber using the two self tapping screws provided and adjust the lamp to the desired angle, replace lens and flange. Connections to the mains must be carried out by a licensed electrician. A waterproof cable joint must be made to stop the luminaire drawing water up the input cable.

The Deck mount version is not suitable for driving over.

Warning - Take care to place the luminaire in a suitably safe position due to operating temperature of the luminaire. When replacing the lamp - make sure to seat the lamp correctly between the two holding bars of the lampholder cradle to avoid shorting out the power supply. The lens must not be covered with flammable material.

Stainless Steel Maintenance: To maintain the finish of 316 stainless steel it is recommended to wash the luminaire with water from time to time to stop salt and corrosive elements building up. If tea staining appears, a commercially available stainless steel cleaner is recommended to remove this.

LAMP CHANGING

CAUTION: Make sure that the power to the luminaire is switched off before attempting to change the lamp. Beware of hot luminaire and lamp. Make absolutely sure when changing lamps that the correct wattage lamp is installed. It is recommended that high quality lamps are used when replacing lamps.

Lamp Changing Sequence IG 1-11: The flange is removed by using the allen key supplied to remove the four allen head screws in the flange and the luminaire is fixed into the mounting canister by two self tapping screws. Remove lamp using cross bar on lamp.

CAUTION: Lamp may be hot!

Disconnect spade terminals from lamp, reconnect to new lamp and use cross bar on lamp to replace into lamp cradle.

INGROUND 1-11 LUMINAIRE INSTALLATION INSTRUCTIONS

NOTE: THESE INSTRUCTIONS MUST NOT CONTRAVENE YOUR LOCAL ELECTRICAL AUTHORITY REGULATIONS, WITH WHICH ALL INSTALLATIONS HERE IN MUST COMPLY. PLEASE KEEP INSTRUCTIONS FOR FUTURE REFERENCE.

The Inground 1-11 is designed to be mounted level with the finished level of concrete, paving, asphalt or ground level etc. The flange is removed by using the allen key supplied to remove the four allen head screws in the flange and the luminaire is fixed into the mounting canister by two self tapping screws.

Remove the luminaire from the mounting canister and place the mounting canister in the desired position. Make certain that there is drainage material beneath the mounting canister to stop water building up inside the mounting canister. If the luminaire is to be driven over-concrete must be placed around the mounting canister and up under canister the rim to take the weight of the vehicle. Drive over speed is limited to 10 kph and the vehicle weight must not exceed 1500kg. Connections to the mains must be carried out by a licensed electrician. A waterproof cable joint must be made to stop the luminaire drawing water up the input cable. Fix the luminaire into the mounting canister using the two self tapping screws provided and adjust the lamp to the desired angle, replace lens and flange.

DECK MOUNTING VERSION

Cut a 165mm hole in the deck timber. Fix the luminaire into the deck timber using the two self tapping screws provided and adjust the lamp to the desired angle, replace lens and flange. Connections to the mains must be carried out by a licensed electrician. A waterproof cable joint must be made to stop the luminaire drawing water up the input cable.

The Deck mount version is not suitable for driving over.

Warning - Take care to place the luminaire in a suitably safe position due to operating temperature of the luminaire. When replacing the lamp - make sure to seat the lamp correctly between the two holding bars of the lampholder cradle to avoid shorting out the power supply. The lens must not be covered with flammable material.

Stainless Steel Maintenance: To maintain the finish of 316 stainless steel it is recommended to wash the luminaire with water from time to time to stop salt and corrosive elements building up. If tea staining appears, a commercially available stainless steel cleaner is recommended to remove this.

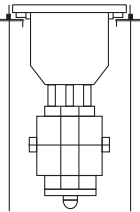
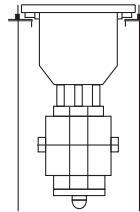
LAMP CHANGING

CAUTION: Make sure that the power to the luminaire is switched off before attempting to change the lamp. Beware of hot luminaire and lamp. Make absolutely sure when changing lamps that the correct wattage lamp is installed. It is recommended that high quality lamps are used when replacing lamps.

Lamp Changing Sequence IG 1-11: The flange is removed by using the allen key supplied to remove the four allen head screws in the flange and the luminaire is fixed into the mounting canister by two self tapping screws. Remove lamp using cross bar on lamp.

CAUTION: Lamp may be hot!

Disconnect spade terminals from lamp, reconnect to new lamp and use cross bar on lamp to replace into lamp cradle.



POND LITE LUMINAIRES INSTALLATION INSTRUCTIONS

NOTE: THESE INSTRUCTIONS MUST NOT CONTRAVENE YOUR LOCAL ELECTRICAL AUTHORITY REGULATIONS, WITH WHICH ALL INSTALLATIONS HERE IN MUST COMPLY. PLEASE KEEP INSTRUCTIONS FOR FUTURE REFERENCE.

Be sure when mounting the Pond Lite that any holes drilled in the pond do not perforate any waterproofing membrane which may cause leaks. If drilling holes is not appropriate then use a Pond Lite weighted version. Use the stainless steel screw and rawlplug supplied to mount the fitting. The Pond Lite is supplied with a 3 metre cable which must be terminated to the transformer output cable making a waterproof connection, using heavy walled adhesive lined heat shrink outside the pond. (If the transformer is to be buried - installation of the transformer must be carried out by a licenced electrician to meet local Electrical Authority Regulations).

Recommendation:

Run all low voltage cables in flexible conduit for extra protection. Use Hunza Cable Joint Kit CJK#150. It is recommended that high quality lamps are used when replacing lamps. Do not over tighten lens ring as this will make removal difficult and may cause lamp to break.

PLEASE NOTE - Pool Chemicals, hard water or salt water may damage the powder coated finish. Stainless steel fittings should be used in these situations.

GLARE GUARD INSTALLATION

Carefully remove lens ring making sure not to drop the glass lens and cause damage to it, keeping gasket in place. Hold body of luminaire tightly and screw Glare Guard ring onto light luminaire. Still holding body of luminaire tightly rotate glare guard to desired position.

Stainless Steel Maintenance: To maintain the finish of 316 stainless steel it is recommended to wash the luminaire with water from time to time to stop salt and corrosive elements building up. If tea staining appears, a commercially available stainless steel cleaner is recommended to remove this.

LAMP CHANGING

CAUTION: Make sure that the power to the luminaire is switched off before attempting to change the lamp. Beware of hot luminaire and lamp. Make absolutely sure when changing lamps that the correct wattage lamp is installed. Incorrect wattage lamps may cause HUNZA™ IG series transformers to overload causing the transformers to heat up and turn the luminaires off and on.

Lamp Changing Sequence (MR16)

Only use open faced lamps, not glass covered lamps, as glass covered lamps may cause luminaire to leak. Unscrew flange, remove gasket and lens. Pull lamp forward until the ceramic lamp holder appears. Hold lamp holder in one hand and remove lamp with other hand very carefully. Do not touch the glass capsule in the middle of the reflector when pushing the lamp back into the ceramic lamp holder. When replacing gasket and lens, make sure there is no dirt or grit on the gasket. Dirt or grit on the gasket may cause luminaire to leak

Gasket and lens sequence

Place lens on top of lamp and put orange gasket on top of lens. Screw on lens ring.

POND LITE LUMINAIRES INSTALLATION INSTRUCTIONS

NOTE: THESE INSTRUCTIONS MUST NOT CONTRAVENE YOUR LOCAL ELECTRICAL AUTHORITY REGULATIONS, WITH WHICH ALL INSTALLATIONS HERE IN MUST COMPLY. PLEASE KEEP INSTRUCTIONS FOR FUTURE REFERENCE.

Be sure when mounting the Pond Lite that any holes drilled in the pond do not perforate any waterproofing membrane which may cause leaks. If drilling holes is not appropriate then use a Pond Lite weighted version. Use the stainless steel screw and rawlplug supplied to mount the fitting. The Pond Lite is supplied with a 3 metre cable which must be terminated to the transformer output cable making a waterproof connection, using heavy walled adhesive lined heat shrink outside the pond. If the transformer is to be buried - installation of the transformer must be carried out by a licenced electrician to meet local Electrical Authority Regulations).

Recommendation:

Run all low voltage cables in flexible conduit for extra protection. Use Hunza Cable Joint Kit CJK#150. It is recommended that high quality lamps are used when replacing lamps. Do not over tighten lens ring as this will make removal difficult and may cause lamp to break.

PLEASE NOTE - Pool Chemicals, hard water or salt water may damage the powder coated finish. Stainless steel fittings should be used in these situations.

GLARE GUARD INSTALLATION

Carefully remove lens ring making sure not to drop the glass lens and cause damage to it, keeping gasket in place. Hold body of luminaire tightly and screw Glare Guard ring onto light luminaire. Still holding body of luminaire tightly rotate glare guard to desired position.

Stainless Steel Maintenance: To maintain the finish of 316 stainless steel it is recommended to wash the luminaire with water from time to time to stop salt and corrosive elements building up. If tea staining appears, a commercially available stainless steel cleaner is recommended to remove this.

LAMP CHANGING

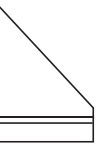
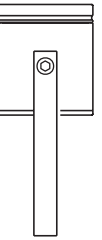
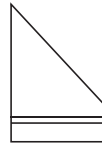
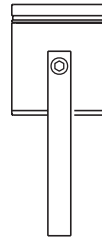
CAUTION: Make sure that the power to the luminaire is switched off before attempting to change the lamp. Beware of hot luminaire and lamp. Make absolutely sure when changing lamps that the correct wattage lamp is installed. Incorrect wattage lamps may cause HUNZA™ IG series transformers to overload causing the transformers to heat up and turn the luminaires off and on.

Lamp Changing Sequence (MR16)

Only use open faced lamps, not glass covered lamps, as glass covered lamps may cause luminaire to leak. Unscrew flange, remove gasket and lens. Pull lamp forward until the ceramic lamp holder appears. Hold lamp holder in one hand and remove lamp with other hand very carefully. Do not touch the glass capsule in the middle of the reflector when pushing the lamp back into the ceramic lamp holder. When replacing gasket and lens, make sure there is no dirt or grit on the gasket. Dirt or grit on the gasket may cause luminaire to leak

Gasket and lens sequence

Place lens on top of lamp and put orange gasket on top of lens. Screw on lens ring.



POOL LITE LUMINAIRES Tested and Approved to IP68 & BSEN60598

INSTALLATION INSTRUCTIONS

NOTE: THESE INSTRUCTIONS MUST NOT CONTRAVENE YOUR LOCAL ELECTRICAL AUTHORITY REGULATIONS, WITH WHICH ALL INSTALLATIONS HERE IN MUST COMPLY. PLEASE KEEP INSTRUCTIONS FOR FUTURE REFERENCE.

1) Fibre Glass Swimming Pools - Cut an 85mm hole in the pool wall at the desired level. Mount the canister in the hole, use an appropriate sealant that will bond to fibre glass and the PVC canister (the pool wall can be up to 20mm thick) and fix the canister in place by the securing nut provided.

2) Existing Concrete Pools - Cut an 85mm hole in the concrete wall. Apply epoxy around the hole and fix the canister by the three mounting holes in the flange using stainless steel screws provided. The canister flange is then seated on the surface of the pool wall and when the luminaire is in place the flange of the luminaire hides the canister flange.

3) New Concrete Pools - Apply PVC cement to the PVC canister and roll it in sand, this creates a key for the plaster/cement to adhere to the canister. Use the holes in the securing nut to wire the PVC canister to the metal reinforcing. The canister is then plastered/concreted into position completely encapsulating the PVC canister on all sides except the opening where the luminaires fits into. The flange should then be flush with the wall of the pool. The design of the PVC canister allows tiles to be laid over the canister flange and the stainless steel luminaires will fit flush against the tiles.

Electrical Connection - A 20mm rigid conduit is inserted into the conduit entry at the rear of the mounting canister using PVC solvent cement to make a water tight joint. As the luminaire is inserted into the canister water is pushed up the conduit, the cable connection is to be terminated above the water level to stop water getting into the junction point. A transformer with fuse protection (not thermal protection) on the extra low voltage output side should be used (the HUNZA™ Wall Mount Pool series is recommended). Refer to your Local Electrical Authority Regulations regarding a fuse on the output of the transformer, and details of pool zone installation regulations.

Earthing Refer to your Local Electrical Authority re earthing and install accordingly.

Warning - Do not operate luminaire when pool is empty. Heat may damage the PVC mounting canister.

BSEN60598

In accordance with BSEN60598 this luminaire has been graded as Class 3 for protection against electric shock and has internal circuits that operate on voltage not exceeding 12 volts.

This luminaire is suitable for mounting only on non-combustible surfaces.

Replace lens immediately if cracked.



POOL LITE LUMINAIRES

INSTALLATION INSTRUCTIONS

NOTE: THESE INSTRUCTIONS MUST NOT CONTRAVENE YOUR LOCAL ELECTRICAL AUTHORITY REGULATIONS, WITH WHICH ALL INSTALLATIONS HERE IN MUST COMPLY. PLEASE KEEP INSTRUCTIONS FOR FUTURE REFERENCE.

ATTENTION: 316 Stainless Steel Properties

Please read the following carefully, this is to bring to your attention to a number of important points pertaining to the properties of 316 stainless steel.

1). 316 Stainless is suitable for use in water with a level of Chlorine (which is dissolved gas in water) of up to 3 parts per million. The chlorine is there to inhibit biological build up in the water.

2). 316 Stainless is suitable for use in water with a level of chloride of up to 1000 parts per million and a pH level of 7.

3). The corrosion factor may double for each 10 degrees of water temperature increase.

4). In the first week after the pool is filled the chemical concentration is often increased to over five times normal level. After the first week the chemicals are allowed to return to normal levels. Therefore corrosion of the luminaire is likely to be severe during this period. This can be averted by removing the luminaire from its mounting canister and placing it out of the water until the chemical level returns to normal.

5). If corrosion occurs and it is not severe the staining may be removed with fresh water and detergent, if the detergent does not remove the staining then a product such as Jenolite can be used. Jenolite is a phosphoric acid solution and should be used with caution! The manufacturers recommendations must be followed carefully.

6). If you are not certain that the chemical level will remain below the specified levels stated above after the initial set up period an electropolished version is available. Electropolishing may increase the corrosion resistance of the luminaire by 33%.

LAMP CHANGING

CAUTION – Make sure that the power to the luminaire is switched off before attempting to change the lamp. Beware of hot luminaire and lamp. Make absolutely sure when changing lamps that the correct wattage lamp is installed. Incorrect wattage lamps may cause the transformer to overload.

Maximum 50 watt MR16 lamp should be used for this luminaire. Only use open-faced lamps, NOT glass covered lamps, as glass covered lamps may cause the luminaire to leak. It is recommended that high quality lamps be used when replacing lamps. Do not over tighten flange as this will make removal difficult and may cause lamp to break.

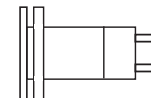
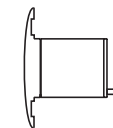
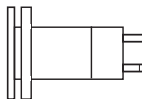
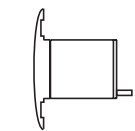
Lamp Changing Sequence

1) Unscrew the flange, remove gasket and lens.

2) Pull lamp forward until the ceramic lamp holder appears

3) Hold lamp holder in one hand and remove the lamp with the other hand very carefully. Do not touch the glass capsule in the middle of the reflector when pushing the lamp back into the ceramic lamp holder.

4) Place the lens on top of lamp and put orange gasket on top of lens. Screw on flange. When replacing gasket and lens, make sure there is no dirt or grit on the gasket. Dirt or grit on the gasket may cause luminaire to leak.



SINGLE & TWIN POLE LITE, TIER LITE, BORDER LITE & BORDER LITE TWIN LUMINAIRES INSTALLATION INSTRUCTIONS

NOTE: THESE INSTRUCTIONS MUST NOT CONTRAVENE YOUR LOCAL ELECTRICAL AUTHORITY REGULATIONS, WITH WHICH ALL INSTALLATIONS HERE IN MUST COMPLY. PLEASE KEEP INSTRUCTIONS FOR FUTURE REFERENCE.

Run the low voltage cable from the transformer (if the transformer is to be buried - installation of the transformer must be carried out by a licenced electrician to meet local Electrical Authority Regulations) in flexible conduit. Make a waterproof connection using heavy walled adhesive lined heat shrink between the luminaire cable and the supply cable.

Warning: Take care to place luminaire in a suitably safe position, due to operating temperature of the luminaire.

Recommendation: Run all low voltage cables in flexible conduit for extra protection. Use Hunza Cable Joint Kit CJK#150. It is recommended that high quality lamps are used when replacing lamps. Do not over tighten lens ring as this will make removal difficult and may cause lamp to break.

LAMP CHANGING

CAUTION: Make sure that the power to the luminaire is switched off before attempting to change the lamp. Beware of hot luminaire and lamp. Make absolutely sure when changing lamps that the correct wattage lamp is installed. Incorrect wattage lamps may cause HUNZA™ IG series transformers to overload causing the transformers to heat up and turn the luminaires off and on.

Tier Lite: To remove hood - hold the metal ring on the lens (do not use the hood) to screw on or unscrew hood and lens to gain access to lamp holder. Make sure gasket is free of any dirt before refitting hood.

Border Lite: Carefully remove the four screws from the face plate and replace capsule. Make sure gasket is free of any dirt before refitting face plate. Do not over tighten screws as this makes it very difficult to remove the screws in the future.

TIER LITE, BORDER LITE & BORDER LITE TWIN WARNING: Do not touch halogen capsule with bare fingers, leave plastic bag over the capsule & push into the lamp holder. Then remove plastic bag before switching fitting on. Tier lite, Border Lite & Border Lite Twin maximum 20 watt Halogen Capsules.

Lamp Changing Sequence (MR16)

Only use open faced lamps, not glass covered lamps, as glass covered lamps may cause the luminaire to leak. Unscrew lens ring, remove gasket and lens. Pull lamp forward until the ceramic lamp holder appears. Hold lamp holder in one hand and remove lamp with other hand very carefully. Do not touch the glass capsule in the middle of the reflector when pushing the lamp back into the ceramic lamp holder. When replacing gasket and lens, make sure there is no dirt or grit on the gasket. Dirt or grit on the gasket may cause luminaire to leak.

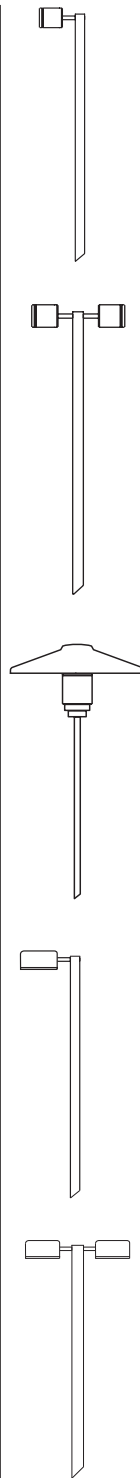
Gasket and lens sequence (Not Tier Lite)

Place lens on top of lamp and put orange gasket on top of lens. Screw on lens ring.

GLARE GUARD INSTALLATION (POLE LITES)

Carefully remove lens ring making sure not to drop the glass lens and cause damage to it, keeping gasket in place. Hold body of luminaire tightly and screw Glare Guard ring onto light luminaire. Still holding body of luminaire tightly rotate glare guard to desired position.

Stainless Steel Maintenance: To maintain the finish of 316 stainless steel it is recommended to wash the luminaire with water from time to time to stop salt and corrosive elements building up.



SINGLE & TWIN POLE LITE, TIER LITE, BORDER LITE & BORDER LITE TWIN RETRO™ LUMINAIRES INSTALLATION INSTRUCTIONS

NOTE: THESE INSTRUCTIONS MUST NOT CONTRAVENE YOUR LOCAL ELECTRICAL AUTHORITY REGULATIONS, WITH WHICH ALL INSTALLATIONS HERE IN MUST COMPLY. PLEASE KEEP INSTRUCTIONS FOR FUTURE REFERENCE MUST BE INSTALLED BY A LICENCED ELECTRICIAN

Make a slurry of concrete, make sure the conduit is protruding out of the concrete slurry and there is at least 500mm of cable protruding out of the conduit. Unscrew the grub screws and remove the bottom section of tube below the lamp holder section and push it into the concrete slurry over the conduit and pull the cable through the tube. Make sure that there is concrete in the bottom of the pole and that the pole is vertical before the concrete sets. There must be concrete in the bottom of the tube to stop moisture build up. Unscrew the orange PVC connection on the bottom of the lamp holder section and slide it over the 230/240 volt supply cable. Connect the phase (active) wire to the RED wire of the luminaire and neutral wire to the BLACK wire of the luminaire. Screw the orange PVC connection back onto the orange nipple of the luminaire and fit the lamp holder section onto the tube using the stainless steel grub screws provided.

DO NOT use a trailing edge ac. dimmer control. Only a leading edge dimmer unit is suitable.

DO NOT connect in close proximity to inductive loads. eg. air conditioning systems, water pumps etc. without appropriate mains filtering. Use a suppression interface module for every six luminaires connected to the circuit.

DO NOT connect to a circuit that has an electronic soft start motor starter on it.

DO NOT connect to any Electronic Home Automation System without checking with the systems Manufacturer that it is suitable for the control of this HUNZA™ fixture.

Warning: If two 50 watt lamps are installed the luminaire will not operate, the electronic transformer has a built in safety shut down system that will not switch the lamps on when the power is applied.

If this situation occurs - a) Switch power off.

b) Remove lamps and replace with two 20 watt lamps & switch power on.

Warning: Take care to place luminaire in a suitably safe position, due to operating temperature of the luminaire.

NOTE: Due to the nature of electronics, the ambient temperature of the installation location must be considered carefully as the luminaire may not operate reliably at temperatures below -8°C (18°F).

LAMP CHANGING

CAUTION: Make sure that the power to the luminaire is switched off before attempting to change the lamp. Beware of hot luminaire and lamp. Make absolutely sure when changing lamps that the correct wattage lamp is installed i.e. 50 watt lamps are most common however RETRO™ luminaires e.g. Twin Pole Lite and luminaires wired to HUNZA™ IG40 transformers all have 20 watt lamps installed. Incorrect wattage lamps may cause the transformers to either - in the case of the RETRO™ luminaires not to illuminate due to overload and in the case of the HUNZA™ IG series transformers overloading will cause the transformers to heat up and turn the luminaires off and on.

TIER LITE, BORDER LITE & BORDER LITE TWIN WARNING: Do not touch halogen capsule with bare fingers, leave plastic bag over the capsule & push into the lamp holder. Then remove plastic bag before switching fitting on.

Lamp Changing Sequence (MR16)

Only use open faced lamps, not glass covered lamp, as glass covered lamp may cause luminaire to leak. Unscrew lens gasket and lens, make sure there is no dirt or grit on the gasket.

Dirt or grit on the gasket may cause luminaire to leak.

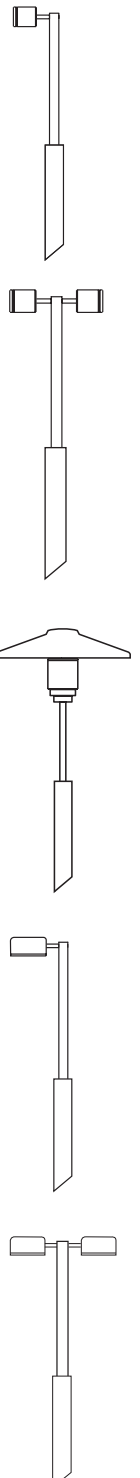
Gasket and lens sequence (Not Tier Lite)

Place lens on top of lamp and put orange gasket on top of lens. Screw on lens ring. It is recommended that high quality lamps are used when replacing lamps. Do not over tighten lens ring as this will make removal difficult and may cause lamp to break.

GLARE GUARD INSTALLATION (POLE LITES)

Carefully remove lens ring making sure not to drop the glass lens and cause damage to it, keeping gasket in place. Hold body of luminaire tightly and screw Glare Guard ring onto light luminaire. Still holding body of luminaire tightly rotate glare guard to desired position.

Stainless Steel Maintenance: To maintain the finish of 316 stainless steel it is recommended to wash the luminaire with water from time to time to stop salt and corrosive elements building up. If tea staining appears, a commercially available stainless steel cleaner is recommended to remove this.



TWIG LITE & WALKWAY LITE LUMINAIRES INSTALLATION INSTRUCTIONS

NOTE: THESE INSTRUCTIONS MUST NOT CONTRAVENE YOUR LOCAL ELECTRICAL AUTHORITY REGULATIONS, WITH WHICH ALL INSTALLATIONS HERE IN MUST COMPLY. PLEASE KEEP INSTRUCTIONS FOR FUTURE REFERENCE.

Remove the head of the luminaire and run the cable up the pole leaving enough cable hanging out of the top of the pole to work on. Place a piece of wood that has a 26mm hole drilled in it over the pole and slide it down so that it sits on top of the ice cream container and holds the pole in a vertical position. Mix up a slurry of concrete and pour into container - recheck that the pole is vertical and leave until concrete is set. When concrete is set wire the Twig Lite head to the transformer secondary cables. A waterproof connection must be made using heavy walled adhesive lined heat shrink. Refit head onto the pole using the stainless steel grub screw.

To install lamp, hold the copper sleeve at the base of the glass, and at the same time carefully rotate and pull out the bottom copper bung from the glass tube. Fit the halogen capsule into lamp holder and replace by carefully rotating and pushing the copper bung back into the glass tube. Replace the head assembly back into the copper pole and fit stainless steel grub screw.

Recommendation:

It is recommended that high quality lamps are used when replacing lamps.

HALOGEN CAPSULE CHANGING

CAUTION: Make sure that the power to the luminaire is switched off before attempting to change the lamp. Beware of hot luminaire and lamp. Make absolutely sure when changing lamps that the correct wattage lamp is installed.

WARNING: Do not touch halogen capsule with bare fingers, leave plastic bag over the capsule & push into the lamp holder. Then remove plastic bag before switching fitting on. Maximum Wattage 20 G4 Halogen Capsule.

TWIG LITE and WALKWAY LITE: To change lamp, hold the copper sleeve at the base of the glass at the same time carefully rotate and pull out the bottom copper bung from the glass tube. Fit the halogen capsule into lamp holder and replace by carefully rotating and pushing the copper bung back into the glass tube. Replace the head assembly back into the copper pole and fit stainless steel grub screw.

Stainless Steel Maintenance: To maintain the finish of 316 stainless steel it is recommended to wash the luminaire with water from time to time to stop salt and corrosive elements building up. If tea staining appears, a commercially available stainless steel cleaner is recommended to remove this.

TWIG & WALKWAY LITE RETRO™ LUMINAIRES INSTALLATION INSTRUCTIONS

NOTE: THESE INSTRUCTIONS MUST NOT CONTRAVENE YOUR LOCAL ELECTRICAL AUTHORITY REGULATIONS, WITH WHICH ALL INSTALLATIONS HERE IN MUST COMPLY. PLEASE KEEP INSTRUCTIONS FOR FUTURE REFERENCE MUST BE INSTALLED BY A LICENCED ELECTRICIAN

Make a slurry of concrete, make sure the conduit is protruding out of the concrete slurry and there is at least 500mm of cable protruding out of the conduit. Unscrew the grub screws and remove the bottom section of tube below the lamp holder section and push it into the concrete slurry over the conduit and pull the cable through the tube. Make sure that there is concrete in the bottom of the pole and that the pole is vertical before the concrete sets. There must be concrete in the bottom of the tube to stop moisture build up. Unscrew the orange PVC connection on the bottom of the lamp holder section and slide it over the 230/240 volt supply cable. Connect the phase (active) wire to the RED wire of the luminaire and neutral wire to the BLACK wire of the luminaire. Screw the orange PVC connection back onto the orange nipple of the luminaire and fit the lamp holder section onto the tube using the stainless steel grub screws provided.

DO NOT use a trailing edge ac. dimmer control. Only a leading edge dimmer unit is suitable. **DO NOT** connect in close proximity to inductive loads. eg. air conditioning systems, water pumps etc. without appropriate mains filtering. Use a suppression interface module for every six luminaires connected to the circuit.

DO NOT carry out a Megger or insulation test on a circuit with a luminaire connected to it. **DO NOT** Connect to a circuit that has an electronic soft start motor starter on it.

DO NOT Connect to any Electronic Home Automation System without checking with that Systems Manufacturer that it is suitable for the control of this HUNZA™ fixture.

NOTE: Due to the nature of electronics, the ambient temperature of the installation location must be considered carefully as the luminaire may not operate reliably at temperatures below -8°C (18°F).

HALOGEN CAPSULE CHANGING

CAUTION: Make sure that the power to the luminaire is switched off before attempting to change the lamp. Beware of hot luminaire and lamp. Make absolutely sure when changing lamps that the correct wattage lamp is installed.

WARNING: Do not touch halogen capsule with bare fingers, leave plastic bag over the capsule & push into the lamp holder. Then remove plastic bag before switching fitting on. Maximum Wattage 20 G4 Halogen Capsule.

TWIG LITE and WALKWAY LITE: To change lamp, hold the copper sleeve at the base of the glass at the same time carefully rotate and pull out the bottom copper bung from the glass tube. Fit the halogen capsule into lamp holder and replace by carefully rotating and pushing the copper bung back into the glass tube. Replace the head assembly back into the copper pole and fit stainless steel grub screw. It is recommended that high quality lamps are used when replacing lamps.

