

Deck Lite

Cat. No. DK



The Deck Lite is designed to mount to flat surfaces e.g. wooden and concrete decks, tiled areas, brick walls, etc. Light is emitted on a horizontal plane through UV stable acrylic lens with anti-glare mesh around 360 degrees via a 5, 10 or 20 watt halogen bi-pin lamp, and does not project any vertical light due to the anti-glare hood.

Ordering Information

Luminaire Type

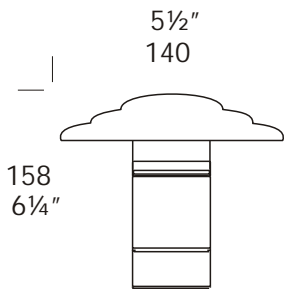
DK - Deck Lite

Material/Finish

BK - Black
BZ - Bronze
GN - Green
MS - Metallic Silver
WH - White

Accessories

CJK150 - Cable Joint Kit



Cop - Copper

Ordering Example: DK BK - Deck Lite in Black

CJK150 - Cable Joint Kit
(Accessories ordered separately)



Patent Pending



FACTORY: Ph: 64-9-528 9471 Fax: 64-9-528 9361.
USA: Ph. 310 560 7310 Fax. 1 877 692 4589.
hunza@hunza.co.nz www.hunza.co.nz
Specifications may change without notice.

130 Felton Matthew Ave, Glen Innes, Auckland, New Zealand.
3237 Long Island St, W. Sacramento, California 95691, USA.
Manufactured in New Zealand.

© 2003 Hunza Holdings Ltd

Luminaire Construction

CNC machined from one of the following metals:

High corrosion resistant 63.5mm (2 1/2") x 10mm (25/64") aluminium. End cap - solid aluminium 63.5mm (2 1/2") rod, with cromate substrate and high UV resistant polyester powder coat -

Colours Black, Bronze, Green, Metallic Silver, White.

Copper 63.5mm (2 1/2") x 10mm (13/32"). End cap - solid copper 63.5mm (2 1/2") rod.

Hood

260mm (10 1/4") x 1.2mm (1/16") hand spun aluminium or copper.

Mounting

Via internal flange with three bolts to wooden deck or concrete.

Features

Lens:

UV stable clear acrylic with anti-glare mesh.

Anti Glare Hood:

Diameter 140mm (5 1/2"). No upward light or glare projected.

Gasket:

Silicone, iron impregnated 220c (4280f)

Lamp Holder:

GU4 350°c (662°f) ceramic multi contact lamp holder with 250°c (480°f) teflon cables.

Accessories:

Cable Joint Kit (Cat. CJK 150)
Not approved for USA /Canada.

Standards

IP66



UL1838

Luminaire Weight

Alum .60kg (1lb 5oz)

Cop 1.160kg (8lb 3oz)

Power Supply

HUNZA® Inground or Wall Mount Transformer: not included.

USA and Canada:

HUNZA® Wall Mount Transformer: not included.

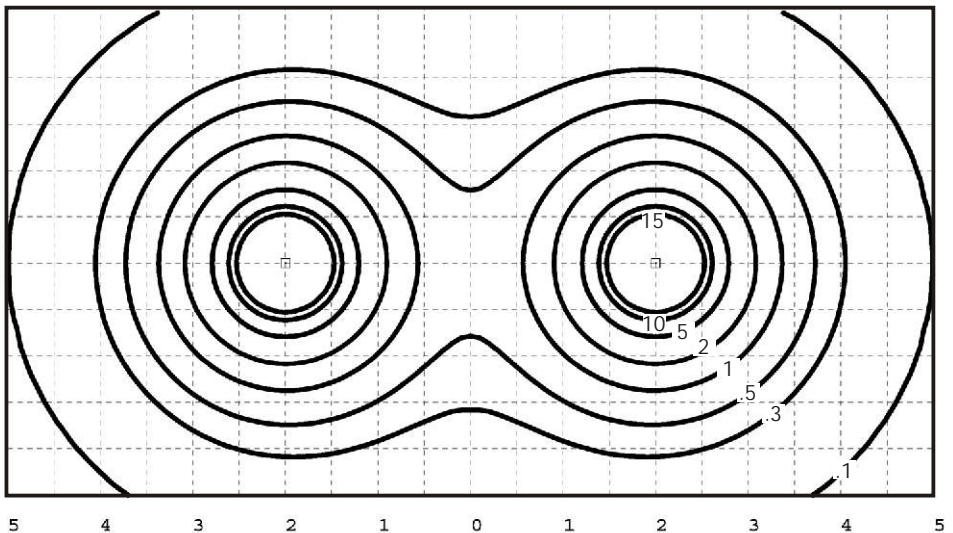
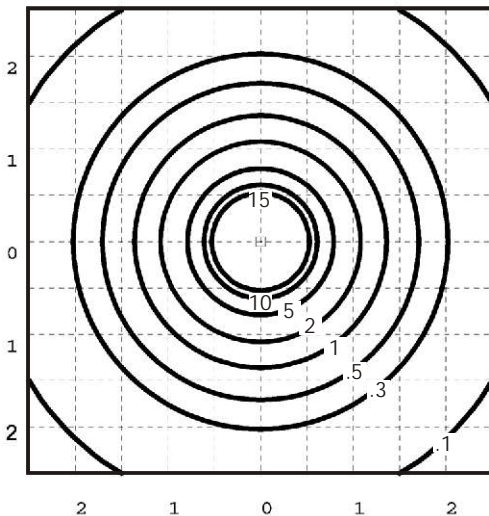
Lamp Type

GU4 Bi-Pin 5, 10, 20 watt lamp max.

USA and Canada:

GU4 Bi-Pin 5, 10, 20 watt lamp max.

Deck Lite 20 watt G4 Bi-Pin lamp - Lens height 100mm (4")



Isolux Lumens Plot - Footcandles = Isolux figures divided by 10.76



FACTORY: Ph: 64-9-528 9471 Fax: 64-9-528 9361.
USA: Ph. 310 560 7310 Fax. 1 877 692 4589.
hunza@hunza.co.nz www.hunza.co.nz
Specifications may change without notice.

130 Felton Matthew Ave, Glen Innes, Auckland, New Zealand.
3237 Long Island St, W. Sacramento, California 95691, USA.
Manufactured in New Zealand.

© 2003 Hunza Holdings Ltd